

looking north from the private rooftop deck



garden



Outdoor space in the city is truly captivating when done well. 1506 does outdoor space exquisitely.

A fabulous patio is located just off the family room that is perfect for outside dining, entertaining friends or simple relaxation. Travel down the path lined by the brick salvaged from the original structure and you will find a garden oasis that connects to another private deck.

Live. Entertain. Relax. Enjoy.

patio



front porch



*All information deemed reliable but not guaranteed.

AGENT: Rick Jarvis
PHONE: 804.359.0009
CELL: 804.305.7722
EMAIL: rick.jarvis@onesouthrealty.com

1435 WEST MAIN STREET
RICHMOND, VIRGINIA 23220
www.onesouthrealty.com

804.353.0009
804.353.0991 FAX



one south
REALTY GROUP

one south
REALTY GROUP

1506 Park Avenue
Richmond, Virginia 23220

kitchen island



The kitchen renovation in 2004, done by Classic Kitchens, features Brookhaven Cherry Cabinetry, Brazilian Granite with quartz, Subzero refrigerator and under-counter freezer, with GE Profile dual fuel range and Asko dishwasher. The floors are recycled heart of pine.

buffet

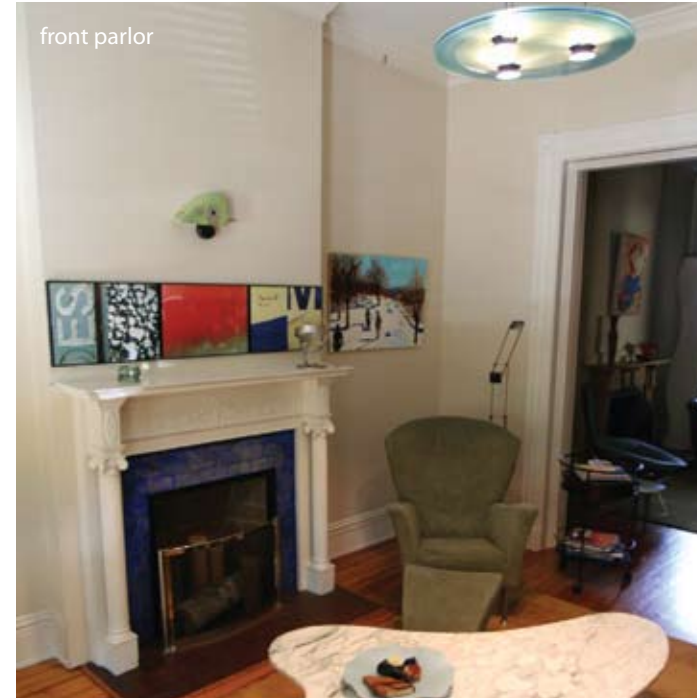


As you travel past the foyer and front parlors, you begin to understand how this home asks you to live. With one of the most powerful and stylish kitchens in Fan District exploding into family room and private patio, the ease of modern living becomes fully realized in the amazing space. True luxury and gourmet seam with a comfort and light to create space that speaks.

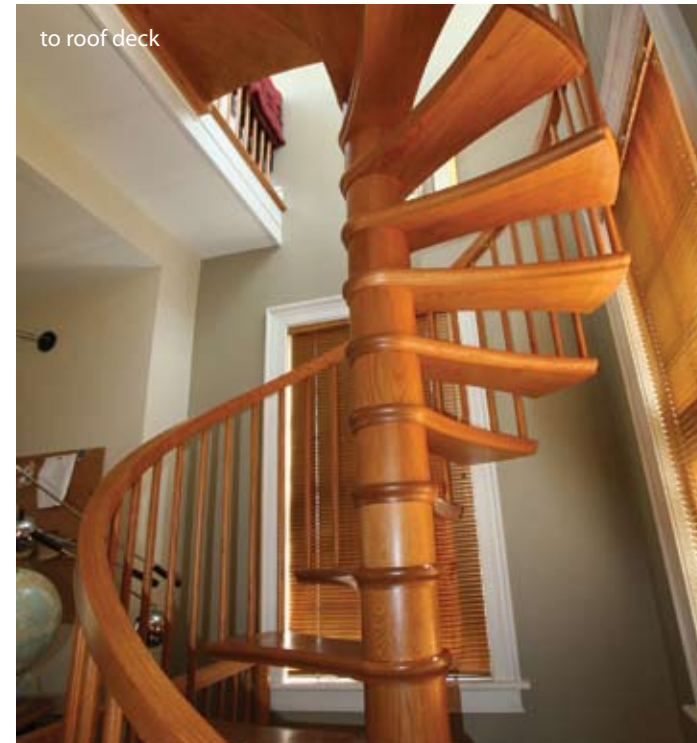
kitchen and family room



front parlor



to roof deck



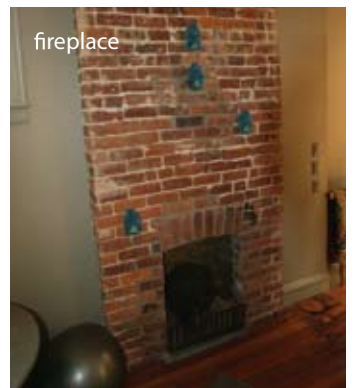
master bath



master bedroom



fireplace



dining room



1506 Park Avenue Richmond Virginia, 23220 \$765,000

- » 3 bedrooms | 2.5 baths
- » Built between 1904 and 1908
- » Rear renovation in 1998
- » Master bath/bedroom renovated in 2002
- » Kitchen redone in 2004
- » 3,556 SF (from city records)
- » 2008 Assessment \$739,200 | \$9,092.16 Taxes
- » Abatement
- » Unfinished basement 464 SF
- » 1 Off-street parking space

Kitchen

- » Cherry cabinetry with Brazilian granite tops
- » Sub Zero Refrigerator and under-counter freezer
- » Asko dishwasher
- » GE Profile dual fuel range

Systems

- » Oil Radiant Heat in front parlors and 2nd floor
- » Forced Hot Air heat in kitchen and family room
- » 2 Zone A/C | Tower cupola is not cooled
- » Roof is comprised of modified bitumen on main part of house and metal tin on rear tower

Conveyances

- » 2 chandeliers in kitchen, dining chandelier and hallway light do not convey
- » Washer/dryer conveys